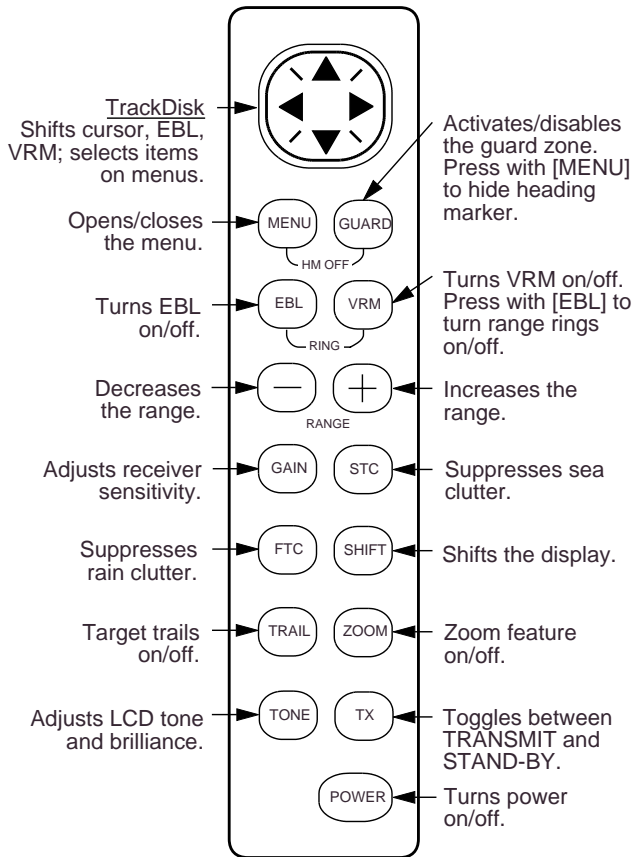


MODEL 1621 MARK-2

Operator's Guide

The purpose of this manual is to provide the basic operating procedures for this equipment. For detailed information, refer to the operator's manual.



Control Panel

Power on/off

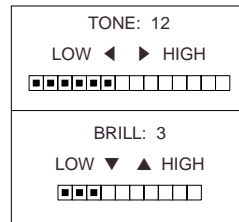
Press [POWER].

Transmitting/stand-by

Press [TX].

LCD tone and brilliance

1. Press [TONE].



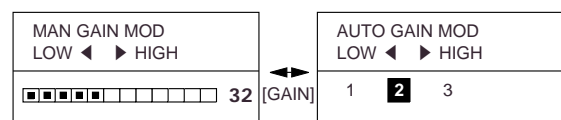
2. Press ◀/▶ for tone; ▲/▼ for brilliance.

Selecting range

Press [+] or [-].

Adjusting sensitivity

1. Press [GAIN] to select manual or automatic adjustment.



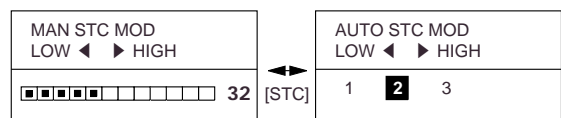
Manual

Automatic

2. Press ◀/▶ to set.

Suppressing sea clutter

1. Press [STC] to select manual or automatic adjustment.



Manual

Automatic

2. Press ◀/▶ to set.



Suppressing rain clutter

Press [FTC].

Shifting the cursor

Press the TrackDisk ()

Measuring range by VRM

1. Press [VRM].
2. Press ▲/▼ to place the VRM on the inner edge of the target.

Measuring bearing by EBL

1. Press [EBL].
2. Press ◀/▶ to bisect the target with EBL.

Showing/hiding range rings

Press [EBL] and [VRM] together.

Hiding the heading marker

Press [MENU] and [GUARD] together. Release the keys to redisplay the marker.

Shifting the display

Press [SHIFT].

Zoom

Select location by cursor and press [ZOOM].

Menu operation

1. Press [MENU].

PRESS ▲/▼ TO SELECT MENU ITEM, ◀/▶ TO CHANGE SETTING.		
1	ECHO STRETCH	ON OFF
2	INT. REJECT	ON OFF
3	NAV DATA	ON OFF
4	VIDEO	NORM RVS
5	WATCHMAN	OFF 5M 10M 20M
6	DIMMER	0 1 2 3

Press ▼/▲ at page boundaries to switch between menus.

PRESS ▲/▼ TO SELECT MENU ITEM, ◀/▶ TO CHANGE SETTING.		
7	DSPL ON STBY	NAV
8	TRAIL TIME	CONT 30S 1M 3M 6M
9	TRAIL BRILL	LOW HIGH
10	RANGE (NM)	1/4 1/2 3/4 1 1.5 2 3 4 6 8 12 16

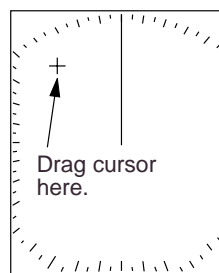
- 2 Press ▲/▼ to select item.
3. Press ◀/▶ to set option.
4. Press [MENU] to register option and close the menu.

Echo trails on/off

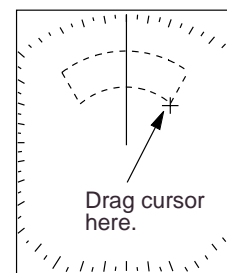
Press [TRAIL]. (Trail brilliance and trail time may be selected on the menu.)

Setting a guard zone

1. Place the cursor at the top left corner for the zone and press [GUARD].
2. Place the cursor at the bottom right corner for the zone and press [GUARD].



1) Drag cursor to top left corner for zone and press [GUARD].



2) Drag cursor to bottom right corner for zone and press [GUARD].

